

Geshem | Shenzhen Geshem Technology Co.,Ltd

2020
PRODUCT CATALOG 1.0





INDUSTRIAL PANEL PC - CAPACITIVE TOUCH / WIDE SCREEN

Fanless and slim design

12-21.5" multi-point capacitive touch/Wide screen

Support Intel Celeron/ Core Series CPU

Provide 6USB/6COM/2 LAN

Support Windows 10/7, Linux

TQ21-51AC/TQ21-7XAC



Features

- ◆ 21.5" industrial display, Multi-Point Capacitive touch Screen / Front Panel IP65
- ◆ Chipset: Intel® Celeron J1900/3855U/3865U/Core i3/i5/i7
- ◆ Provide 4*USB+6*COM
- ◆ Standard DDR3/DDR4 RAM, up to 16GB
- ◆ Provide 2*GbE LAN RJ45 1000M

Ordering Information

TYPE	DESCRIPTION
TQ21-51AC	21.5"/J1900/2G/64G/4USB/ 6RS232/2LAN/VGA/HDMI/12V5A
TQ21-71AC	21.5"/3855U/2G/64G/4USB/ 6RS232/2LAN/VGA/HDMI/12V5A
TQ21-72AC	21.5"/3865U/2G/64G/4USB/ 6RS232/2LAN/VGA/HDMI/12V5A
TQ21-73AC	21.5"/6th Gen i3/4G/64G/4USB/ 6RS232/2LAN/VGA/HDMI/12V5A
TQ21-75AC	21.5"/6th Gen i5/4G/64G/4USB/ 6RS232/2LAN/VGA/HDMI/12V5A
TQ21-77AC	21.5"/6th Gen i7/4G/64G/4USB/ 6RS232/2LAN/VGA/HDMI/12V5A
TQ21-74AC	21.5"/7th Gen i3/4G/64G/4USB/ 6RS232/2LAN/VGA/HDMI/12V5A
TQ21-76AC	21.5"/7th Gen i5/4G/64G/4USB/ 6RS232/2LAN/VGA/HDMI/12V5A
TQ21-78AC	21.5"/7th Gen i7/4G/64G/4USB/ 6RS232/2LAN/VGA/HDMI/12V5A

Specifications

Display	
Screen	21.5" TFT LCD
Resolution	1920*1080
Brightness	250cd/m ²
Contrast	1000:1
Touchscreen	Multi-Point Capacitive touch
Performance	
Chipset	Intel® Celeron J1900/3855U/3865U/Core i3/i5/i7
RAM	J1900 Standard 2GB DDR3, up to 8GB 3855U/3865U/Core i3/i5/i7 Standard 2GB DDR4, up to 16GB
Hardware Monitor	Monitors voltage, CPU, TEMP
Watchdog Timer	0-255 sec by software
Storage	SSD 64GB up to 512GB
Power	
Power Supply	9-24V DC(Standard 12V/5A adaptor, 9-36V DC optional)
O/S	
O/S	Windows 10、Linux (J1900 support Win7)
I/O Port	
USB	J1900: 3*USB2.0+1*USB3.0 3855U/3865U/Core 6th/7th: 4*USB 3.0
Ethernet	2*GbE LAN RJ45 1000M
COM	6*RS232 (1-2*RS485/RS422 optional)
Audio	1*Line-out+1*Mic
Display	1*VGA, 1*HDMI
MiniPCle	1*MiniPCle(WIFI/BT/3G/4G optional)
GPIO	1*4 in/4 out
Environmental	
Anti-vibration	5-19Hz/1.0mm amplitude; 19-200Hz/1.0g, acceleration
Anti-shock	10g acceleration, 11ms duration
IP Level	Front panel IP65
Reliability	MTBF ≥ 5000h; MTTR ≤ 0.5h
Operating Temperature	0°C ~ 50°C with air flow
Storage Temperature	-30°C ~ 70°C
Operating Humidity	95% @40°C, non-condensing
Mechanical	
Dimensions	527mm(L)*317.5mm(W)*54.9mm(H)
Mounting size	VESA mounting: 75*75mm/100*100mm Embedded mounting: 520mm*312mm
Material	Fanless High-strength and elegant Al-alloy panel
Weight	5.29kg/7.78kg(NET/Gross)
Color	Silver

TQ19-51AC/TQ19-7XAC



1

Industrial panel PC
–
Capacitive touch /
Wide screen

Features

- ◆ 19.5" industrial display, Multi-Point Capacitive touch Screen / Front Panel IP65
- ◆ Chipset: Intel® Celeron J1900/3855U/3865U/Core i3/i5/i7
- ◆ Provide 4*USB+6*COM
- ◆ Standard DDR3/DDR4 RAM, up to 16GB
- ◆ Provide 2*GbE LAN RJ45 1000M

2

Industrial panel PC
–
Resistive touch

3

Rugged tablet

Ordering Information

TYPE	DESCRIPTION
TQ19-51AC	19.5"/J1900/2G/64G/4USB/ 6RS232/2LAN/VGA/HDMI/12V5A
TQ19-71AC	19.5"/3855U/2G/64G/4USB/ 6RS232/2LAN/VGA/HDMI/12V5A
TQ19-72AC	19.5"/3865U/2G/64G/4USB/ 6RS232/2LAN/VGA/HDMI/12V5A
TQ19-73AC	19.5"/6 th Gen i3/4G/64G/4USB/ 6RS232/2LAN/VGA/HDMI/12V5A
TQ19-75AC	19.5"/6 th Gen i5/4G/64G/4USB/ 6RS232/2LAN/VGA/HDMI/12V5A
TQ19-77AC	19.5"/6 th Gen i7/4G/64G/4USB/ 6RS232/2LAN/VGA/HDMI/12V5A
TQ19-74AC	19.5"/7 th Gen i3/4G/64G/4USB/ 6RS232/2LAN/VGA/HDMI/12V5A
TQ19-76AC	19.5"/7 th Gen i5/4G/64G/4USB/ 6RS232/2LAN/VGA/HDMI/12V5A
TQ19-78AC	19.5"/7 th Gen i7/4G/64G/4USB/ 6RS232/2LAN/VGA/HDMI/12V5A

4

Embedded Box PC/
Rackmount PC

Specifications

Display

Screen	19.5" TFT LCD
Resolution	1440*900
Brightness	250cd/m ²
Contrast	1000:1
Touchscreen	Multi-Point Capacitive touch

Performance

Chipset	Intel® Celeron J1900/3855U/3865U/Core i3/i5/i7
RAM	J1900 Standard 2GB DDR3, up to 8GB 3855U/3865U/Core i3/i5/i7 Standard 2GB DDR4, up to 16GB
Hardware Monitor	Monitors voltage, CPU, TEMP
Watchdog Timer	0-255 sec by software
Storage	SSD 64GB up to 512GB

Power

Power Supply	9-24V DC(Standard 12V/5A adaptor, 9-36V DC optional)
O/S	Windows 10、Linux (J1900 support Win7)

I/O Port

USB	J1900:3*USB2.0+1*USB3.0 3855U/3865U/Core 6 th /7 th : 4*USB 3.0
Ethernet	2* GbE LAN RJ45 1000M
COM	6*RS232 (1-2*RS485/RS422 optional)
Audio	1*Line-out+1*Mic
Display	1*VGA, 1*HDMI
MiniPCle	1*MiniPCle(WIFI/BT/3G/4G optional)
GPIO	1*4 in/4 out

Environmental

Anti-vibration	5-19Hz/1.0mm amplitude; 19-200Hz/1.0g, acceleration
Anti-shock	10g acceleration, 11ms duration
IP Level	Front panel IP65
Reliability	MTBF ≥5000h; MTTR ≤0.5h
Operating Temperature	0°C ~ 50°C with air flow
Storage Temperature	-30°C ~ 70°C
Operating Humidity	95% @40°C, non-condensing

Mechanical

Dimensions	472.2mm(L)*319.2mm(W)*53.3mm(H)
Mounting size	VESA mounting: 75*75mm/100*100mm Embedded mounting: 462mm*309mm
Material	Fanless High-strength and elegant Al-alloy panel
Weight	4.48kg/5.98kg(NET/Gross)
Color	Silver

TQ17-51AC/TQ17-7XAC



Features

- ◆ 17.3" industrial display, Multi-Point Capacitive touch Screen / Front Panel IP65
- ◆ Chipset: Intel® Celeron J1900/3855U/3865U/Core I3/I5/I7
- ◆ Provide 4*USB+6*COM
- ◆ Standard DDR3/DDR4 RAM, up to 16GB
- ◆ Provide 2*GbE LAN RJ45 1000M

Ordering Information

TYPE	DESCRIPTION
TQ17-51AC	17.3"/J1900/2G/64G/4USB/ 6RS232/2LAN/VGA/HDMI/12V5A
TQ17-71AC	17.3"/3855U/2G/64G/4USB/ 6RS232/2LAN/VGA/HDMI/12V5A
TQ17-72AC	17.3"/3865U/2G/64G/4USB/ 6RS232/2LAN/VGA/HDMI/12V5A
TQ17-73AC	17.3"/6th Gen I3/4G/64G/4USB/ 6RS232/2LAN/VGA/HDMI/12V5A
TQ17-75AC	17.3"/6th Gen I5/4G/64G/4USB/ 6RS232/2LAN/VGA/HDMI/12V5A
TQ17-77AC	17.3"/6th Gen I7/4G/64G/4USB/ 6RS232/2LAN/VGA/HDMI/12V5A
TQ17-74AC	17.3"/7th Gen I3/4G/64G/4USB/ 6RS232/2LAN/VGA/HDMI/12V5A
TQ17-76AC	17.3"/7th Gen I5/4G/64G/4USB/ 6RS232/2LAN/VGA/HDMI/12V5A
TQ17-78AC	17.3"/7th Gen I7/4G/64G/4USB/ 6RS232/2LAN/VGA/HDMI/12V5A

Specifications

Display	
Screen	17.3" TFT LCD
Resolution	1920*1080
Brightness	/
Contrast	/
Touchscreen	Multi-Point Capacitive touch
Performance	
Chipset	Intel® Celeron J1900/3855U/3865U/Core I3/I5/I7
RAM	J1900:2GB DDR3, up to 8GB 3855U/3865U/Core: 2GB DDR4, up to 16GB
Hardware Monitor	Monitors voltage, CPU, TEMP
Watchdog Timer	0-255 sec by software
Storage	SSD 64GB, up to 512GB
Power	
Power Supply	9-24V DC(Standard 12V/5A adaptor, 9-36V DC optional)
O/S	
O/S	Windows 10、Linux (J1900 support Win7)
I/O Port	
USB	J1900: 3*USB2.0+1*USB3.0 3855U/3865U/Core 6th/7th: 4*USB 3.0
Ethernet	2*GbE LAN RJ45 1000M
COM	6*RS232 (1-2*RS485/RS422 optional)
Audio	1*Line-out+1*Mic
Display	1*VGA, 1*HDMI
MiniPCle	1*MiniPCle(WIFI/BT/3G/4G optional)
GPIO	1*4 in/4 out
Environmental	
Anti-vibration	5-19Hz/1.0mm amplitude; 19-200Hz/1.0g, acceleration
Anti-shock	10g acceleration, 11ms duration
IP Level	Front panel IP65
Reliability	MTBF ≥ 5000h; MTTR ≤ 0.5h
Operating Temperature	0°C ~ 50°C with air flow
Storage Temperature	-30°C ~ 70°C
Operating Humidity	95% @40°C, non-condensing
Mechanical	
Dimensions	/
Mounting size	VESA mounting: 75*75mm/100*100mm Embedded mounting: /
Material	Fanless High-strength and elegant Al-alloy panel
Weight	/
Color	Silver

TQ15-51AC/TQ15-7XAC



1

Industrial panel PC
–
Capacitive touch /
Wide screen

Features

- ◆ 15.6" industrial display, Multi-Point Capacitive touch Screen / Front Panel IP65
- ◆ Chipset: Intel® Celeron J1900/3855U/3865U/Core i3/i5/i7
- ◆ Provide 4*USB+6*COM
- ◆ Standard DDR3/DDR4 RAM, up to 16GB
- ◆ Provide 2*GbE LAN RJ45 1000M

2

Industrial panel PC
–
Resistive touch

3

Rugged tablet

Ordering Information

TYPE	DESCRIPTION
TQ15-51AC	15.6"/J1900/2G/64G/4USB/ 6RS232/2LAN/VGA/HDMI/12V5A
TQ15-71AC	15.6"/3855U/2G/64G/4USB/ 6RS232/2LAN/VGA/HDMI/12V5A
TQ15-72AC	15.6"/3865U/2G/64G/4USB/ 6RS232/2LAN/VGA/HDMI/12V5A
TQ15-73AC	15.6"/6th Gen i3/4G/64G/4USB/ 6RS232/2LAN/VGA/HDMI/12V5A
TQ15-75AC	15.6"/6th Gen i5/4G/64G/4USB/ 6RS232/2LAN/VGA/HDMI/12V5A
TQ15-77AC	15.6"/6th Gen i7/4G/64G/4USB/ 6RS232/2LAN/VGA/HDMI/12V5A
TQ15-74AC	15.6"/7th Gen i3/4G/64G/4USB/ 6RS232/2LAN/VGA/HDMI/12V5A
TQ15-76AC	15.6"/7th Gen i5/4G/64G/4USB/ 6RS232/2LAN/VGA/HDMI/12V5A
TQ15-78AC	15.6"/7th Gen i7/4G/64G/4USB/ 6RS232/2LAN/VGA/HDMI/12V5A

4

Embedded Box PC/
Rackmount PC

Specifications

Display

Screen	15.6" TFT LCD
Resolution	1920*1080
Brightness	300 cd/m ²
Contrast	800:1
Touchscreen	Multi-Point Capacitive touch

Performance

Chipset	Intel® Celeron J1900/3855U/3865U/Core i3/i5/i7
RAM	J1900 Standard 2GB DDR3, up to 8GB 3855U/3865U/Core i3/i5/i7 Standard 2GB DDR4, up to 16GB
Hardware Monitor	Monitors voltage, CPU, TEMP
Watchdog Timer	0-255 sec by software
Storage	SSD 64GB up to 512GB

Power

Power Supply	9-24V DC(Standard 12V/5A adaptor, 9-36V DC optional)
--------------	--

O/S

O/S	Windows 10、Linux (J1900 support Win7)
-----	---------------------------------------

I/O Port

USB	J1900: 3*USB2.0+1*USB3.0 3855U/3865U/Core 6th/7th: 4*USB 3.0
Ethernet	2*GbE LAN RJ45 1000M
COM	6*RS232 (1-2*RS485/RS422 optional)
Audio	1*Line-out+1*Mic-in
Display	1*VGA, 1*HDMI
MiniPCle	1*MiniPCle(WIFI/BT/3G/4G optional)
GPIO	1*4 in/4 out

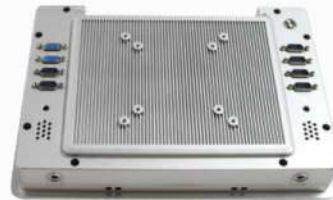
Environmental

Anti-vibration	5-19Hz/1.0mm amplitude; 19-200Hz/1.0g, acceleration
Anti-shock	10g acceleration, 11ms duration
IP Level	Front panel IP65
Reliability	MTBF ≥ 5000h; MTTR ≤ 0.5h
Operating Temperature	0°C ~ 50°C with air flow
Storage Temperature	-30°C ~ 70°C
Operating Humidity	95% @40°C, non-condensing

Mechanical

Dimensions	406.2mm(L)*255.6mm(W)*52.3mm(H)
Mounting size	VESA mounting: 75*75mm/100*100mm Embedded mounting: 396mm*245mm
Material	Fanless High-strength and elegant Al-alloy panel
Weight	3.57kg/4.77kg(NET/Gross)
Color	Silver

TQ12-51AC/TQ12-7XAC



Features

- ◆ 12.1" industrial display, Multi-Point Capacitive touch Screen / Front Panel IP65
- ◆ Chipset: Intel® Celeron J1900/3855U/3865U/Core i3/i5/i7
- ◆ Provide 4*USB+6*COM
- ◆ Standard DDR3/DDR4 RAM, up to 16GB
- ◆ Provide 2*GbE LAN RJ45 1000M

Ordering Information

TYPE	DESCRIPTION
TQ12-51AC	12.1"/J1900/2G/64G/4USB/ 6RS232/2LAN/VGA/HDMI/12V5A
TQ12-71AC	12.1"/3855U/2G/64G/4USB/ 6RS232/2LAN/VGA/HDMI/12V5A
TQ12-72AC	12.1"/3865U/2G/64G/4USB/ 6RS232/2LAN/VGA/HDMI/12V5A
TQ12-73AC	12.1"/6th Gen I3/4G/64G/4USB/ 6RS232/2LAN/VGA/HDMI/12V5A
TQ12-75AC	12.1"/6th Gen I5/4G/64G/4USB/ 6RS232/2LAN/VGA/HDMI/12V5A
TQ12-77AC	12.1"/6th Gen I7/4G/64G/4USB/ 6RS232/2LAN/VGA/HDMI/12V5A
TQ12-74AC	12.1"/7th Gen I3/4G/64G/4USB/ 6RS232/2LAN/VGA/HDMI/12V5A
TQ12-76AC	12.1"/7th Gen I5/4G/64G/4USB/ 6RS232/2LAN/VGA/HDMI/12V5A
TQ12-78AC	12.1"/7th Gen I7/4G/64G/4USB/ 6RS232/2LAN/VGA/HDMI/12V5A

Specifications

Display

Screen	12.1" TFT LCD
Resolution	1280*800
Brightness	350 cd/m ²
Contrast	800:1
Touchscreen	Multi-Point Capacitive touch

Performance

Chipset	Intel® Celeron J1900/3855/3856/Core i3/i5/i7
RAM	J1900: 2GB DDR3, up to 8GB 3855U/3865U/Core i3/i5/i7: 2GB DDR4, up to 16GB
Hardware Monitor	Monitors voltage, CPU, TEMP
Watchdog Timer	0-255 sec by software
Storage	SSD 64GB, up to 512GB

Power

Power Supply	9-24V DC(Standard 12V/5A adaptor, 9-36V DC optional)
--------------	--

O/S

O/S	Windows 10、Linux (J1900 support Win7)
-----	---------------------------------------

I/O Port

USB	J1900: 3*USB2.0+1*USB3.0 3855U/3865U/Core 6th/7th: 4*USB 3.0
Ethernet	2*GbE LAN RJ45 1000M
COM	6*RS232(1~2*RS485/RS422 optional)
Audio	1*Line-out+1*Mic
Display	1*VGA, 1*HDMI
MiniPCle	1*MiniPCle(WIFI/BT/3G/4G optional)
GPIO	1*4 in/4 out

Environmental

Anti-vibration	5-19Hz/1.0mm amplitude; 19-200Hz/1.0g, acceleration
Anti-shock	10g acceleration, 11ms duration
IP Level	Front panel IP65
Reliability	MTBF ≥ 5000h; MTTR ≤ 0.5h
Operating Temperature	0°C ~ 50°C with air flow
Storage Temperature	-30°C ~ 70°C
Operating Humidity	95% @40°C, non-condensing

Mechanical

Dimensions	308.6mm(L)*210.8mm(W)*52.5mm(H)
Mounting size	VESA mounting: 75*75mm/100*100mm Embedded mounting: 298mm*201mm
Material	Fanless High-strength and elegant Al-alloy panel
Weight	2.12kg/3.12kg(NET/Gross)
Color	Silver

www.geshem.cn/en

Shenzhen Geshem Technology Co.,Ltd

Email: info@geshem.cn

Sale Tel: +86 755 29705358

Tel: +86 755 86164919 / 27905358

Foreign Trade Department: +86 755 29705358 / 86164914

After-sales Service Tel: +86 755 86166629 Ext: 8006

Fax: +86 755 86728016

Address: 2/F, No.5, North 2nd lane, Chuangye 2nd Road,
Bao'an District, Shenzhen, China

Germany Branch Office

Geshem Technology GmbH

Email: sales@geshem.de

Mob: +49-160-8491459

Tel: +49-2161-56256813

Web: www.geshem.de

Add: Gerkerath 171, 41179 Moenchengladbach, Germany

Indian Branch Office

Micon Automation System Pvt. Ltd.

Email: info@miconindia.com, sales@miconindia.com

Tel: +91 (0) 79-29701448, (0) 9723462390

Web: www.miconindia.com; www.we-con.in

A-814, Siddhi Vinayak Towers, B/H. DCP Office, Off S. G. Road,
Makarba, Ahmedabad - 380 051, (GUJARAT INDIA)